

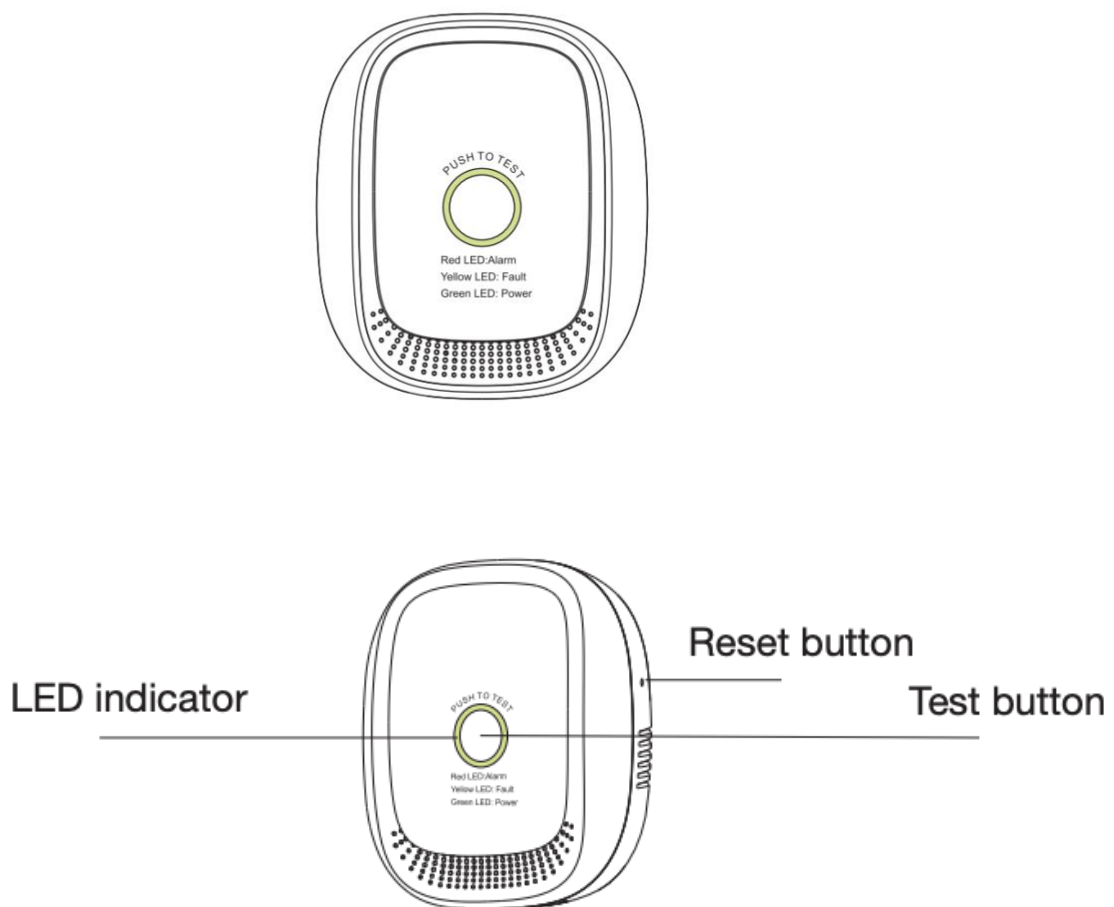


Maevi Gas Sensor Quick Start Guide

Introduction

Maevi Gas Sensor uses an extra lower power consumption ZigBee wireless module. It is used for detecting combusting gas leakage. It can also be used as a ZigBee repeater that extends wireless transmission distance. The gas detector adopts a high stability semi-conductor gas sensor with little sensitivity drift.

Get to know your device



Buttons

Reset Button	<ul style="list-style-type: none"> Return the device to default factory settings
Test Button	<ul style="list-style-type: none"> Press the test button to enter test mode. The LED indicator will flash three times and the alarm will beep three times.

LED Indicator

LED Status	Status	Alarm Sound
Green LED	Normal	No
LED flashes alternatively	Device warming up	Beep once when powered on
Red LED flashes	Alarm	Rapid beeps
Yellow LED solid	Fault	No

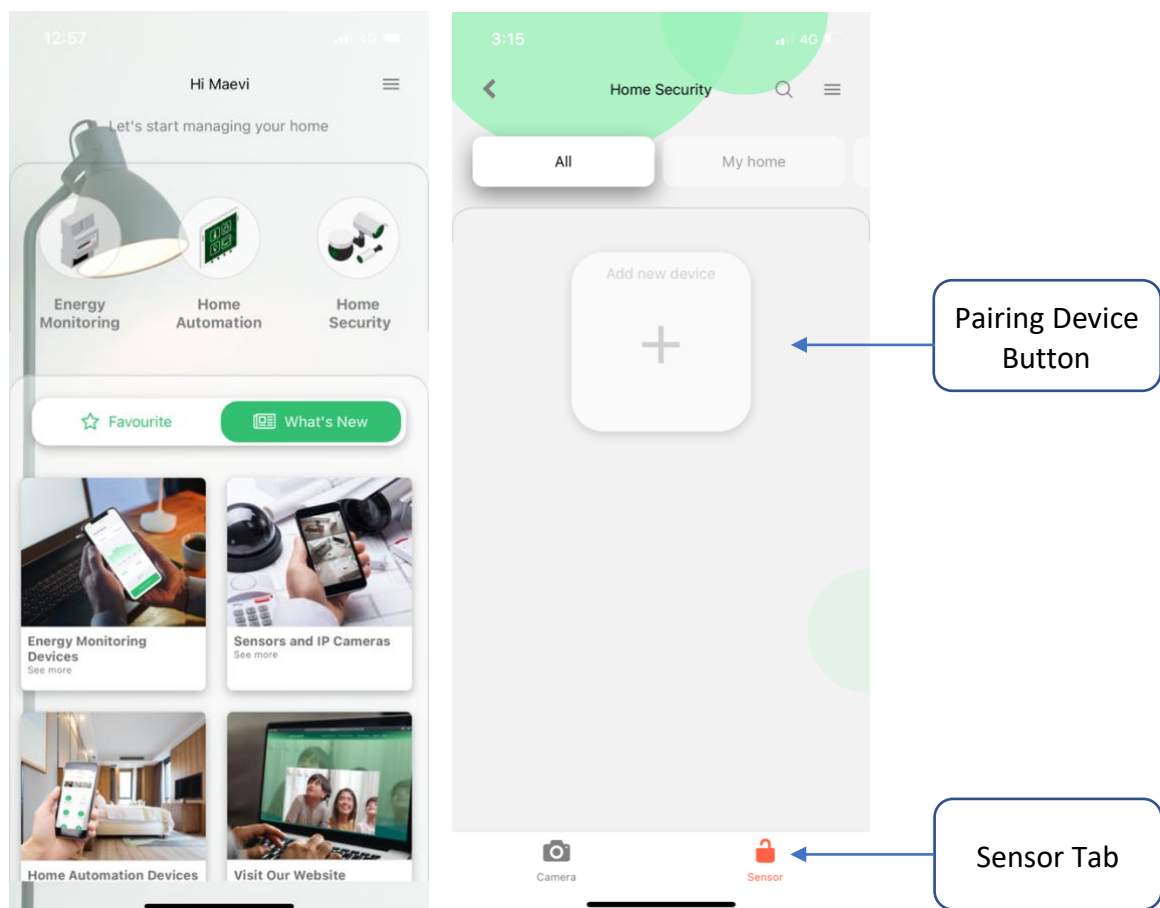
Get Started

To get started, you will need :

- Maevi Gateway
- Maevi Gas Sensor
- Maevi Mobile App
(Available for download on Google Play Store and Apple App Store)

Then follow the steps below:

1. Plug the Gas detector to power outlet, the LED indicator will flash alternatively for three minutes, indicating the sensor is warming up.
2. After the LED indicator become solid green, open Maevi App and go to “Home Security” tab.
3. Select the “Sensor” tab.
4. Select the “Add New Device” button to pair the Gas Sensor with the Gateway.



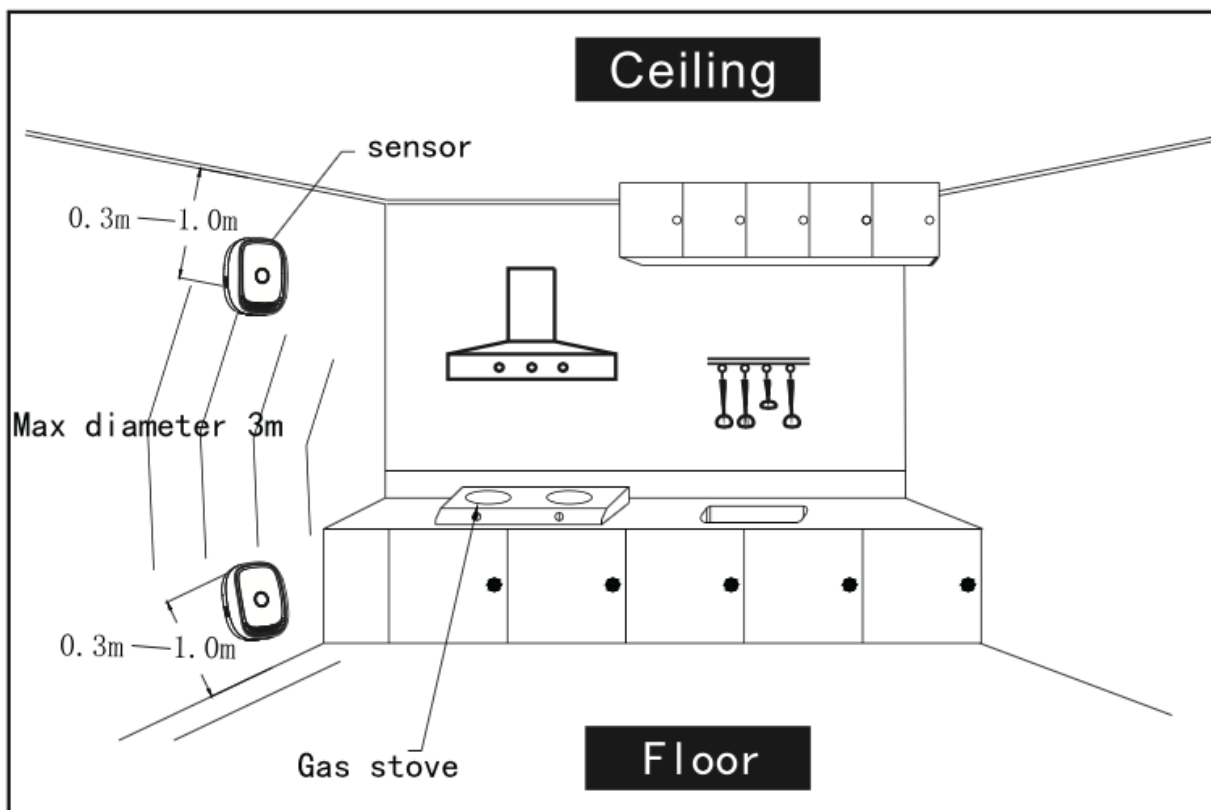
Tips: You can also press and hold the “Z” button on the Gateway for two seconds until the LED indicator turns steady blue.

5. Select Gateway, now the Gateway will start searching for new devices to be paired with.
6. The Gas Sensor will join the gateway's network automatically.
7. The LED light will be off and then light up in green when pairing is successful. The Gas Sensor should now appear in the app as Gas Sensor. If not, refresh the "Home Security" page by pull it down and release.
8. Click the Gas Sensor to see the individual info page.
9. Place the Gas Detector at your desired place. **(Refer to Mounting Instructions)**

Mounting Instruction

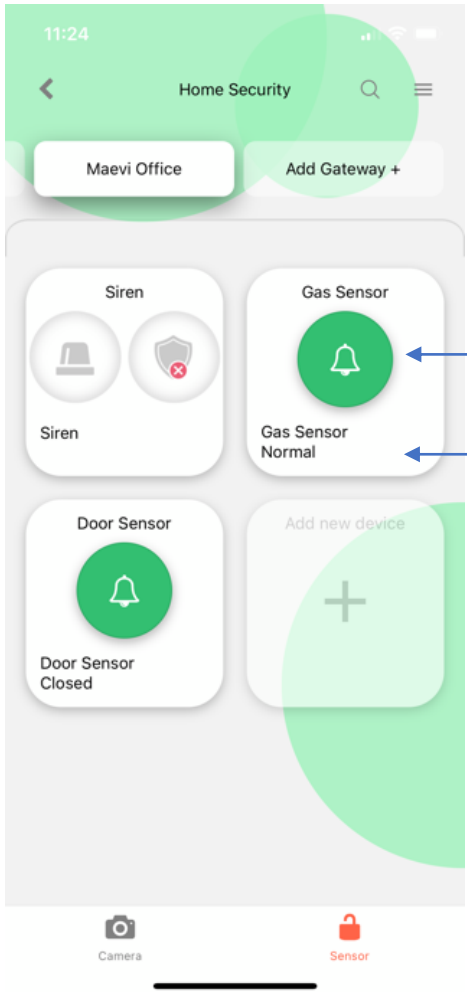
Before installation, please confirm whether the gas density is heavier or lighter than the air. If the gas is heavier than the air, such as LPG, install at 0.3-1m height from the floor, less than 1.5m from the gas source.

If the gas is lighter than air, such as natural gas, manufactured gas, and marsh gas, install at 0.3 to 1m height from the ceiling, less than 1.5 m from the gas source.



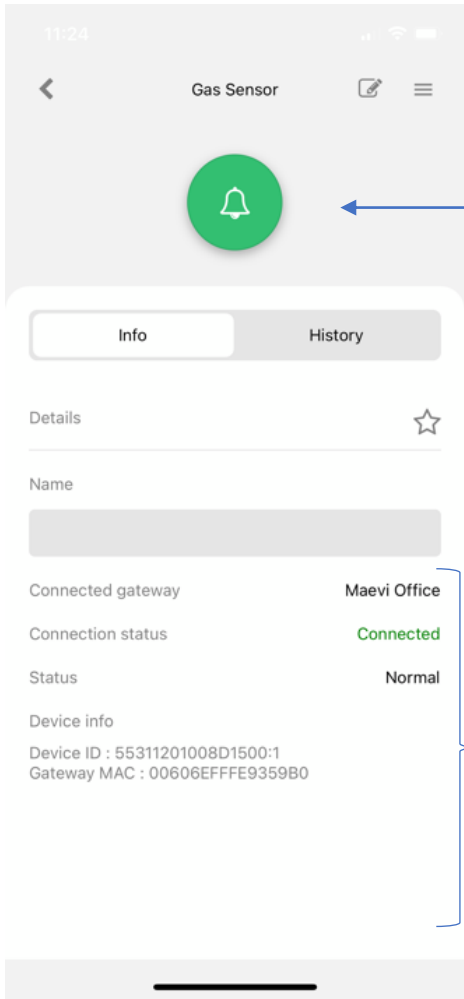
Mounting Example

Features



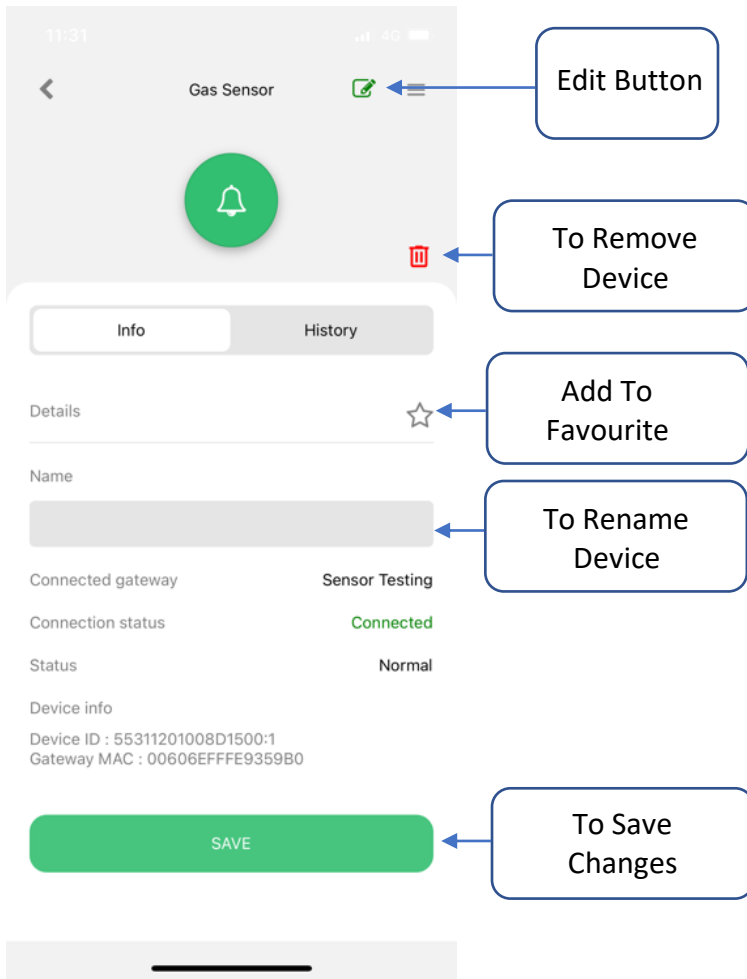
Notification ON/OFF

Status Device

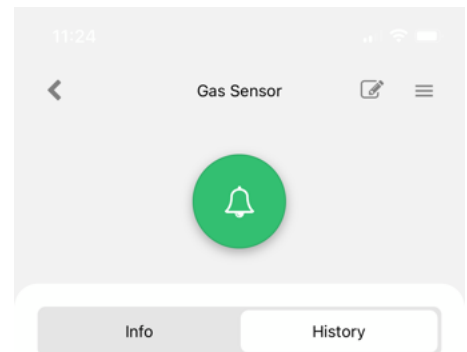


Notification ON/OFF

Device Status/ Info



Info Page

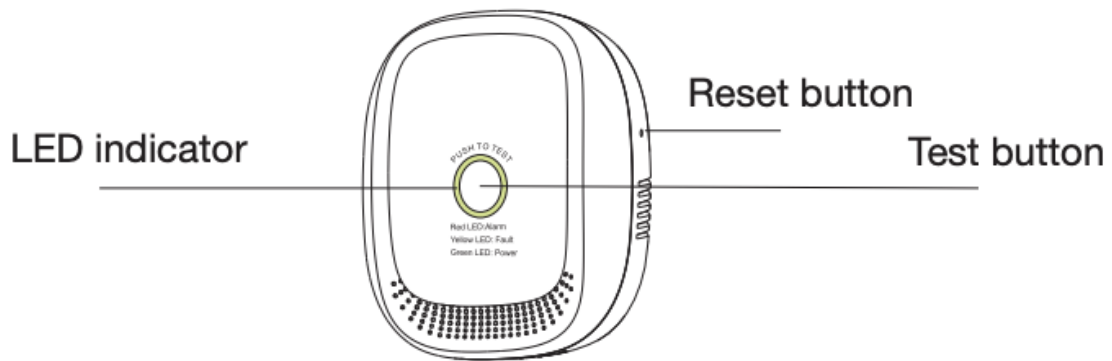


Activity Log

- 03/08/2021 11:18:06am Normal
- 03/08/2021 11:18:05am Flammable Gas Detected!
- 03/08/2021 11:18:05am Flammable Gas Detected!
- 03/08/2021 11:13:46am Normal
- 03/08/2021 11:13:45am Flammable Gas Detected!
- 03/08/2021 11:13:45am Flammable Gas Detected!
- 03/08/2021 11:04:55am Normal
- 03/08/2021 11:04:54am Flammable Gas Detected
- 03/08/2021 11:04:54am Flammable Gas Detected
- 03/08/2021 10:13:16am Normal
- 03/08/2021 10:13:14am Flammable Gas Detected!
- 03/08/2021 10:13:14am Flammable Gas Detected!

History Page

Reset Gas Sensor



Steps:

1. Use a pin key tool to press and hold the reset button for five seconds until the LED indicator flashes green six times.
2. Now, Gas Sensor is returned to the default factory setting.