



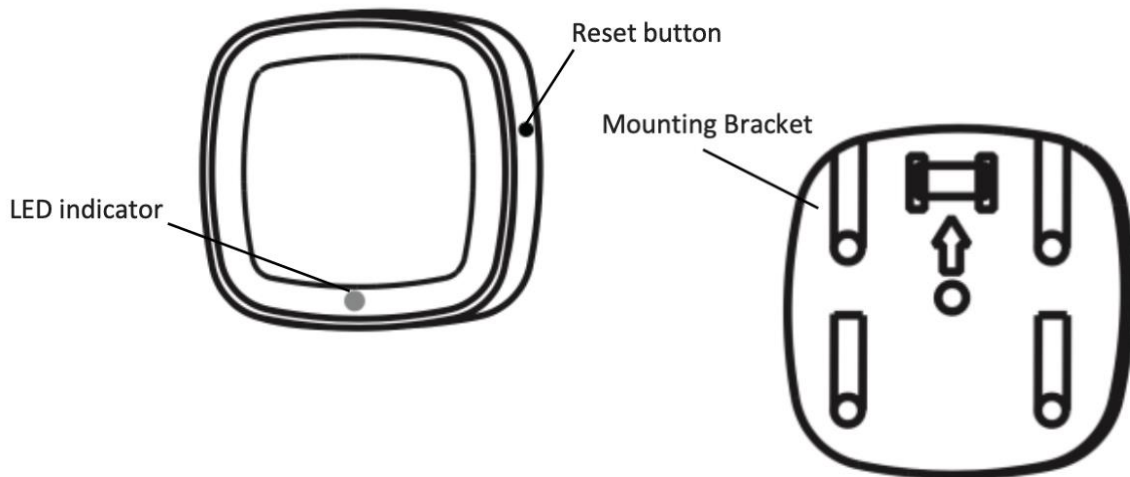
Maevi Motion Sensor

Quick Start Guide

Introduction

Maevi Motion Sensor detects movement in your property. It allows you to receive notifications from Maevi app when movement is detected. This can be used to trigger an alarm.

Get to know your device



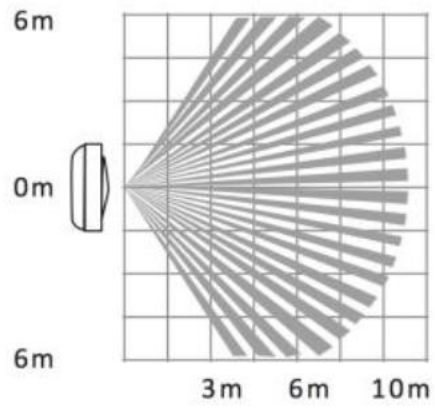
Button

Reset Button	<ul style="list-style-type: none"> • Set the device in pairing mode to join the Zigbee network • Return the device to default factory settings
--------------	------------------------------------------------------------------------------------------------------------------------------------------------------------------------

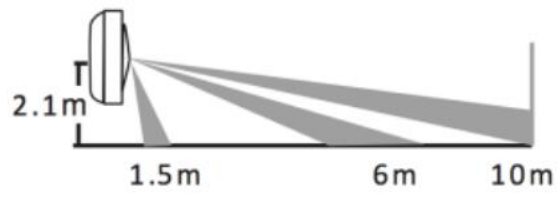
LED Indicator

LED Status	What it means
Green LED flashes	The device is prepared to join a network (when you press and hold the reset button for 2 seconds)
Green LED flashes six times	The device leaves the network (when you press and hold the reset button to return it to default factory settings)
Red flashes one time	The device has detected movement

Sensing Range (Above View)



Sensing Range (Side View)



Get Started

To get started, you will need :

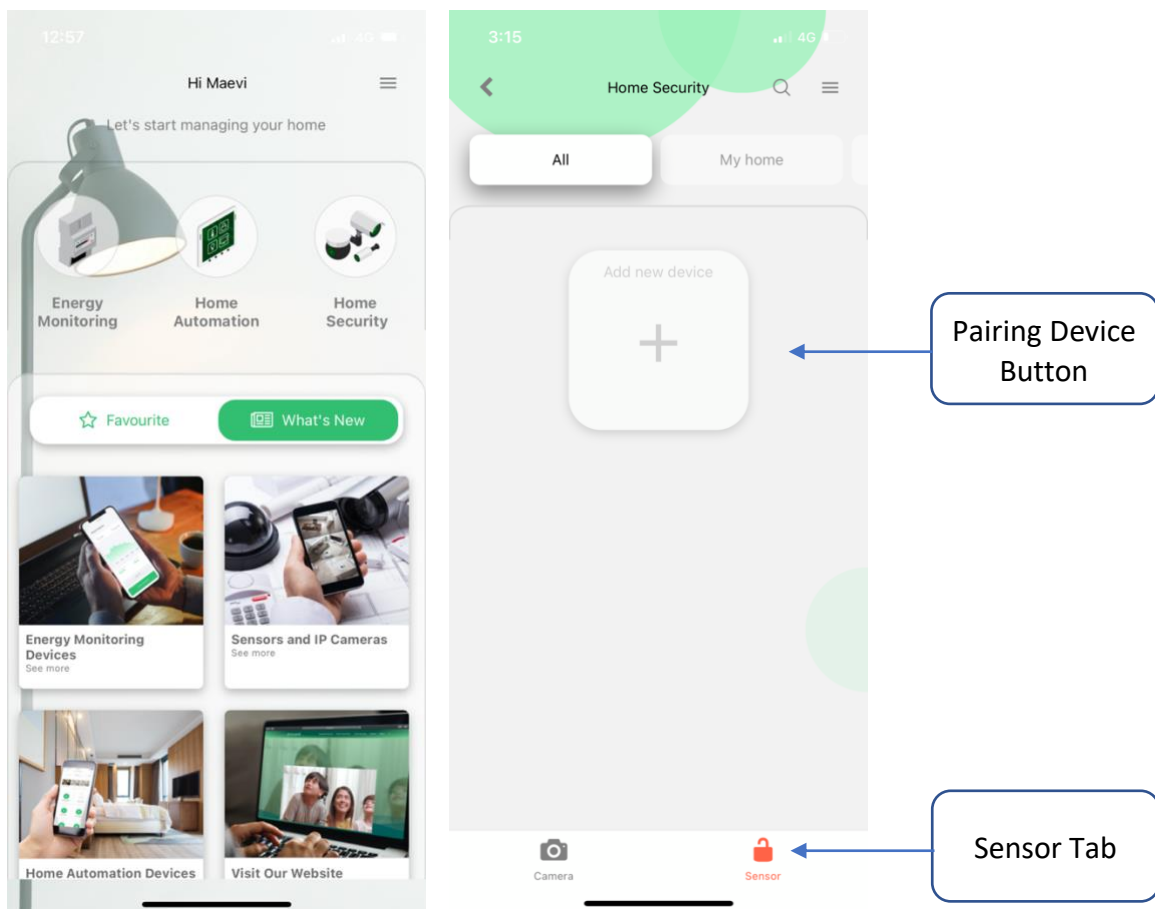
- Maevi Gateway
- Maevi Motion Sensor
- Maevi Mobile App
(Available for download on Google Play Store and Apple App Store)

Then follow the steps below:

1. Remove the pull tab to power on the device. The LED indicator will be flashing red indicating the device is in its warm-up state. After 30 seconds, the LED will turn off and warm-up complete.

Tips: If there is no battery inside, please insert a CR123A battery.

2. Open Maevi App and go to “Home Security” tab.
3. Select the “Sensor” tab.
4. Select the “Add New Device” button to pair the Motion Sensor with the Gateway.



Tips: You can also press and hold the “Z” button on the Gateway for two seconds until the LED indicator turns steady blue.

5. Select Gateway, now the Gateway will start searching for new devices to be paired with.
6. Immediately, during the searching process, use a pin key tool to press and hold the reset button for 2 seconds until the LED flashes green to add it to the system.
7. The LED will turn solid for a while when pairing is successful. The Motion Sensor should now appear in the app as Motion Sensor. If not, refresh the “Home Security” page by pull it down and release.
8. Click the Motion Sensor to see the individual info page.
9. Place the Motion Sensor at your desired place. (**Refer to Install Motion Sensor**)

Install Motion Sensor

Note: The position of the device effects the range and performance of the sensor. (Please refer to sensing range - Sensing Range (Above View) and Sensing Range (Side View))

Step:

1. Please ensure all surfaces are clean, dry, and float and the temperature are over 10°C before attempting to place the devices, or the adhesive will not be fully effective.

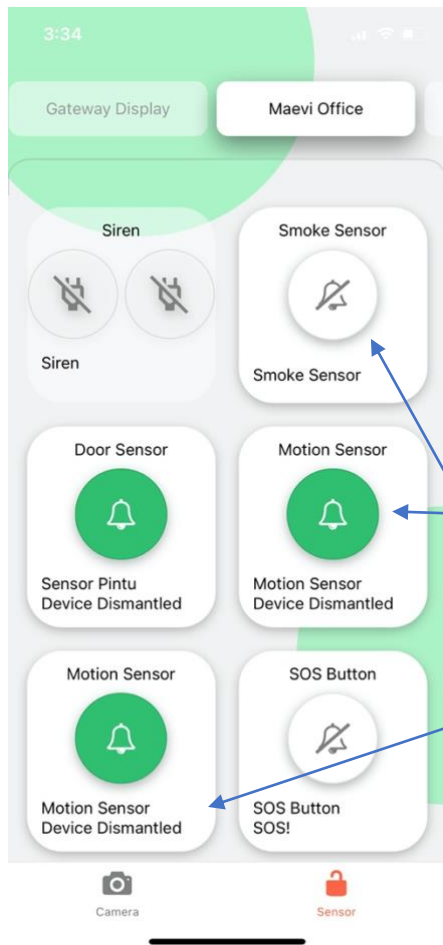


2. Follow the diagrams below to fix the brackets and put the detector onto the bracket.



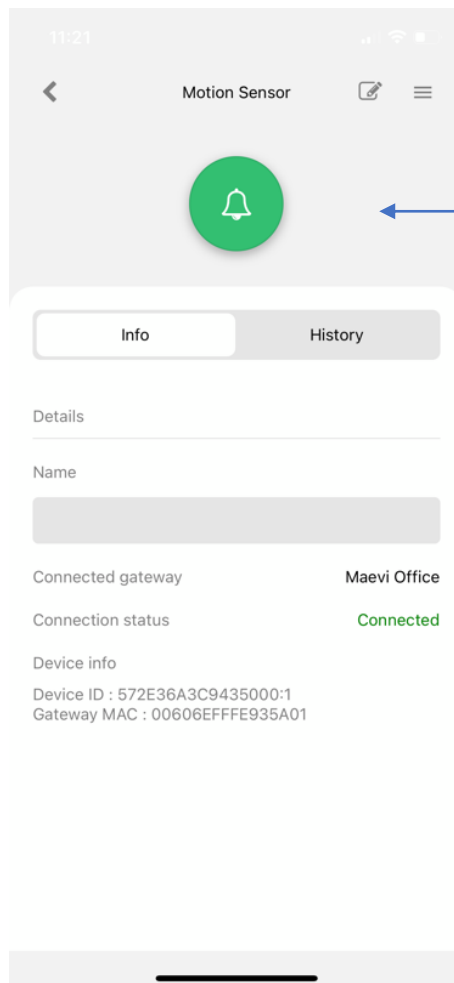
3. Your motion sensor is now ready to use.

Features



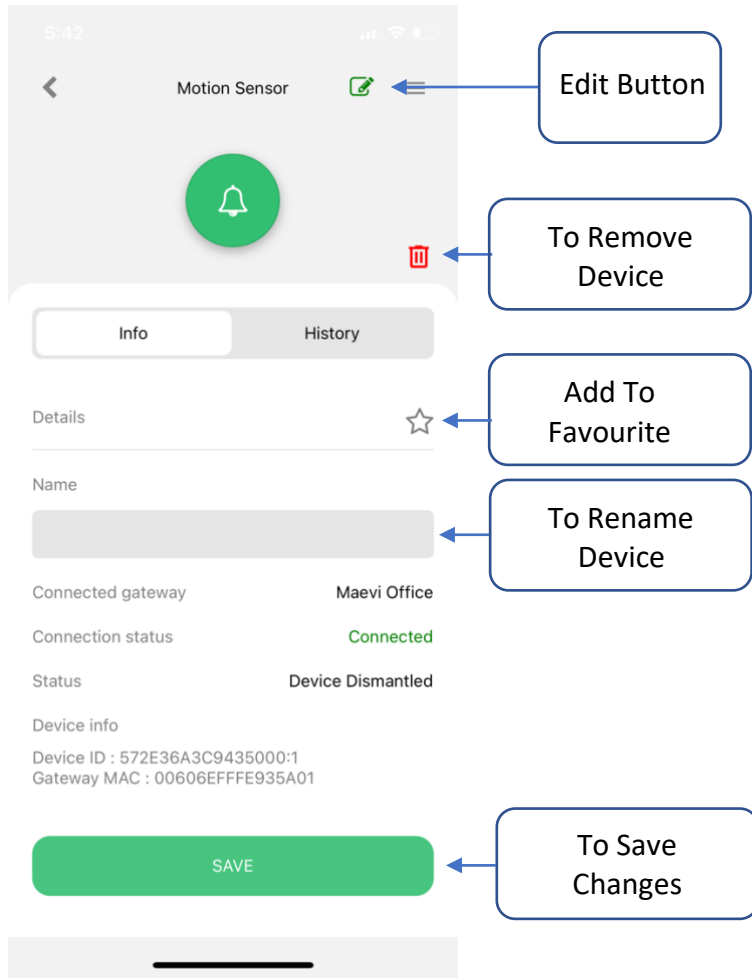
Notification ON/OFF

Status Device

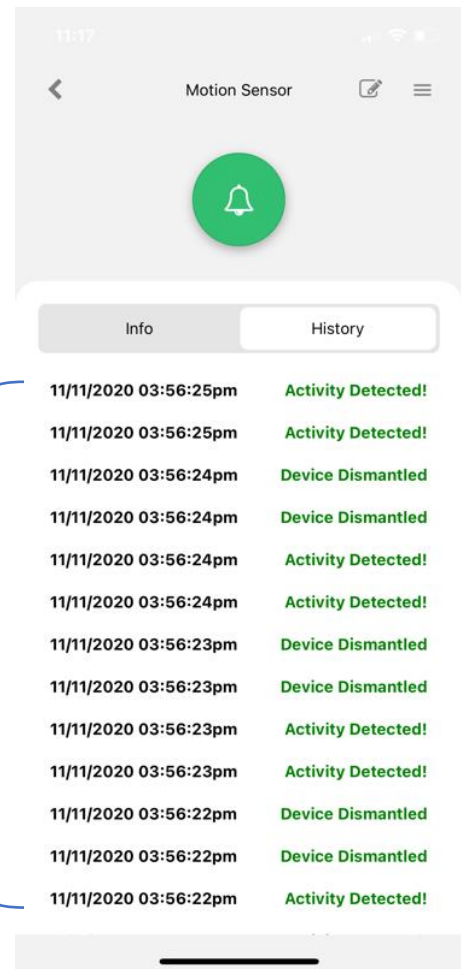


Notification ON/OFF

Device Status/ Info



Info Page



History Page

Reset Motion Sensor



Steps:

1. Use a pin key tool to press and hold the reset button for 5 seconds until the LED indicator flashes 6 times. (Red, Yellow and Green)
2. Now, Motion Sensor is returned to the default factory setting.