

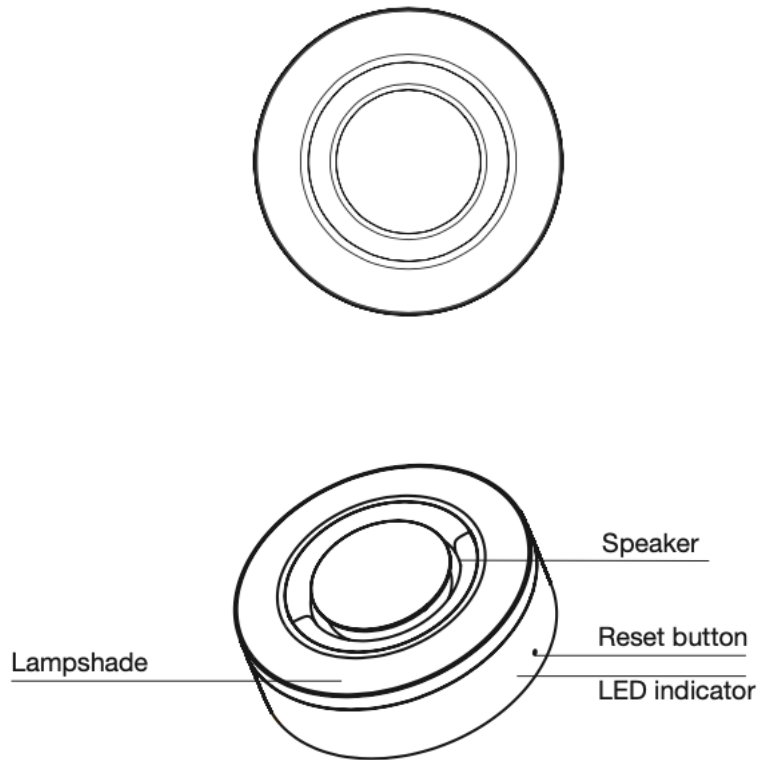


Maevi Siren
Quick Start Guide

Introduction

Maevi Siren is used for anti-theft alarm system, it will sound and flash alarm after receiving alarm signals from other Maevi Security Sensors. It adopts Zigbee wireless network and can be used as a repeater that extends transmission distance to other devices.

Get to know your device



Button

Reset Button	<ul style="list-style-type: none"> • Set the device in pairing mode to join the Zigbee network • Return the device to default factory settings
--------------	--

LED Indicator

LED Status	What it means
Green LED flashes	The device is prepared to join a network (when you press and hold the reset button for 2 seconds)
Green LED flashes six times	The device leaves the network (when you press and hold the reset button to return it to default factory settings).

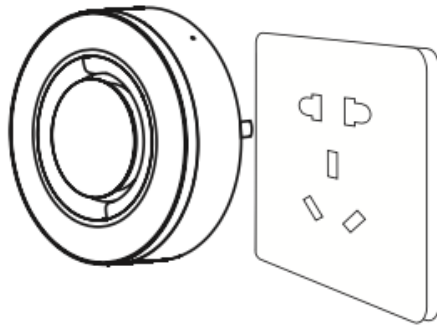
Get Started

To get started, you will need :

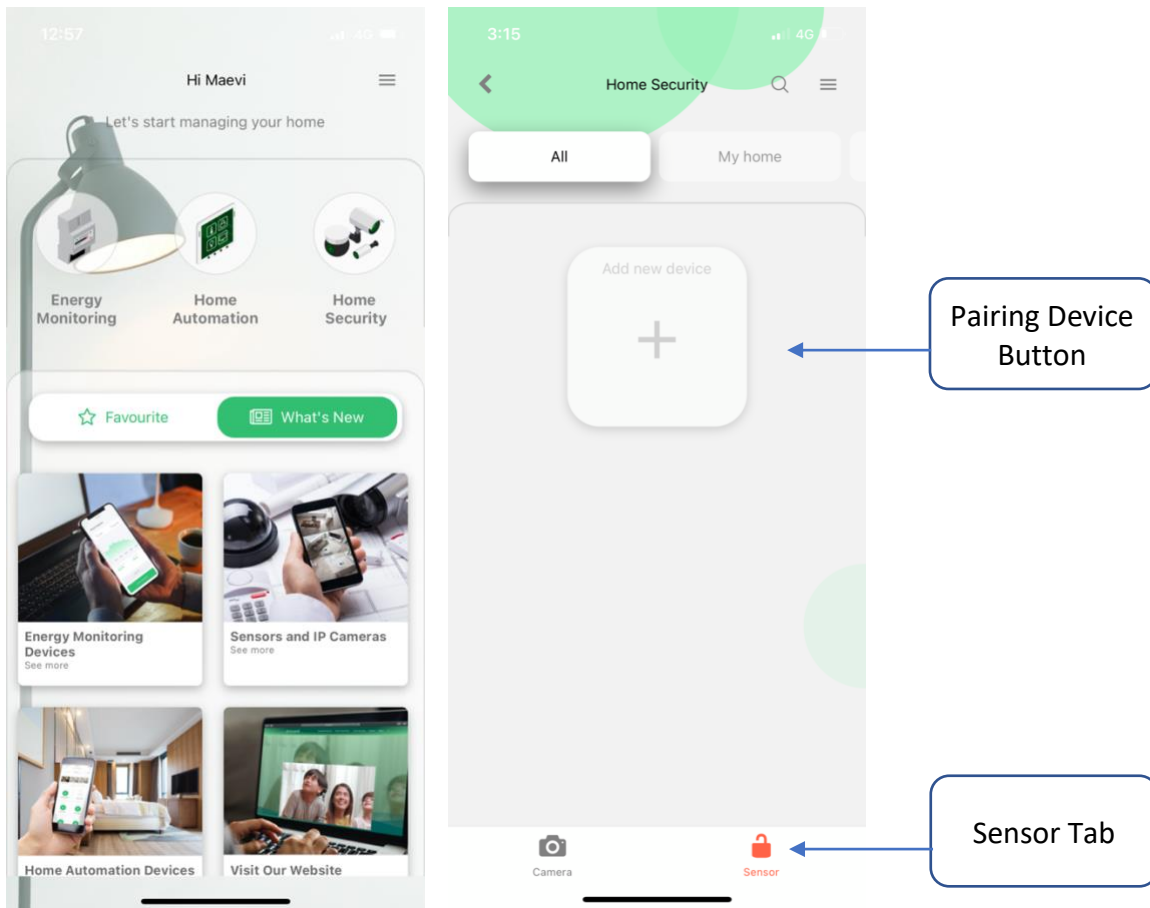
- Maevi Gateway
- Maevi Siren
- Maevi Mobile App
(Available for download on Google Play Store and Apple App Store)

Then follow the steps below:

1. Plug your Maevi Siren into an AC outlet. Power on the socket.

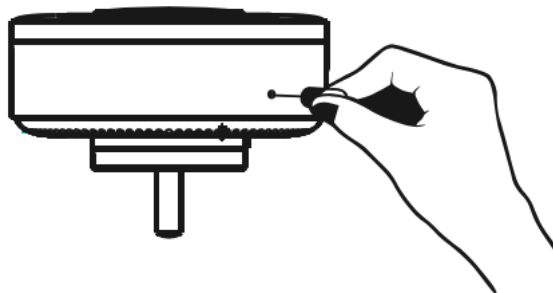


2. Open Maevi App and go to “Home Security” tab.
3. Select “Sensor” tab.
4. Select “Add New Device” button to pair the Siren with the Gateway.



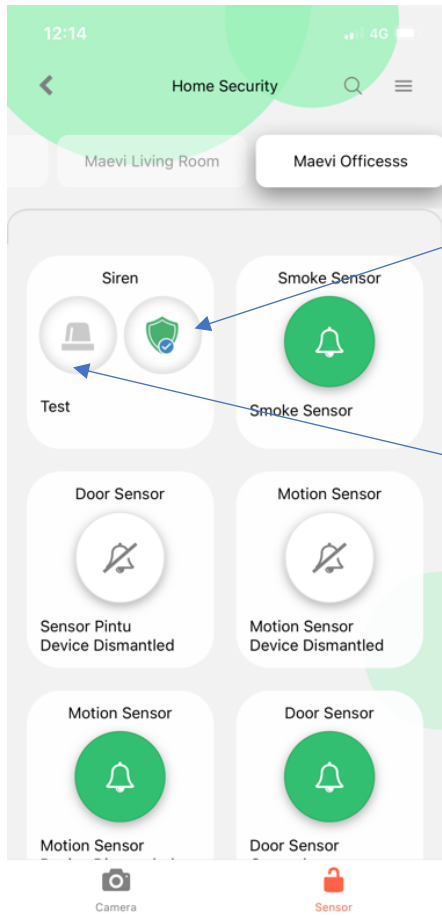
Tips: You can also press and hold the “Z” button on the Gateway for two seconds until the LED indicator turns steady blue.

5. Select Gateway, now the Gateway will start searching for new devices to be paired with.
6. Immediately, during the searching process, use a pin key tool to press and hold the reset button for 2 seconds until the LED indicator start flashing.



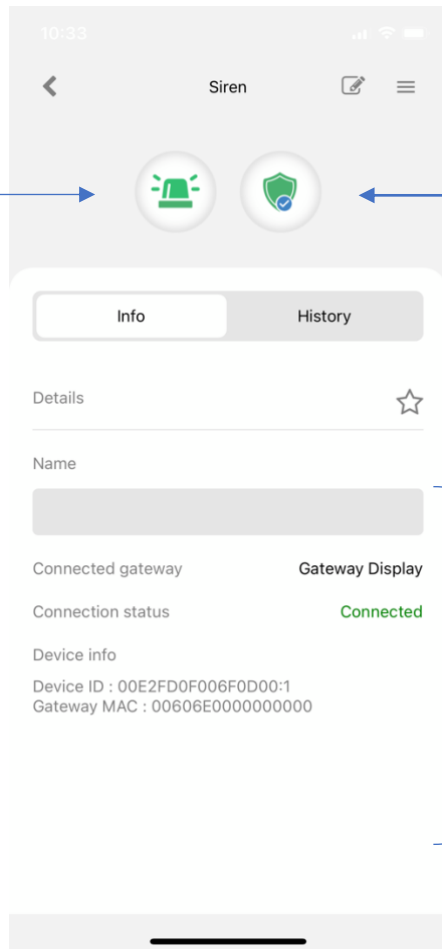
7. The Led indicator on the Siren becomes steady when it successfully joins into the network. The Siren should now appear in the app as Siren. If not, refresh the “Home Security” page by pull it down and release.
8. Click the Siren to see the individual info page.

Features



Arm/Disarmed

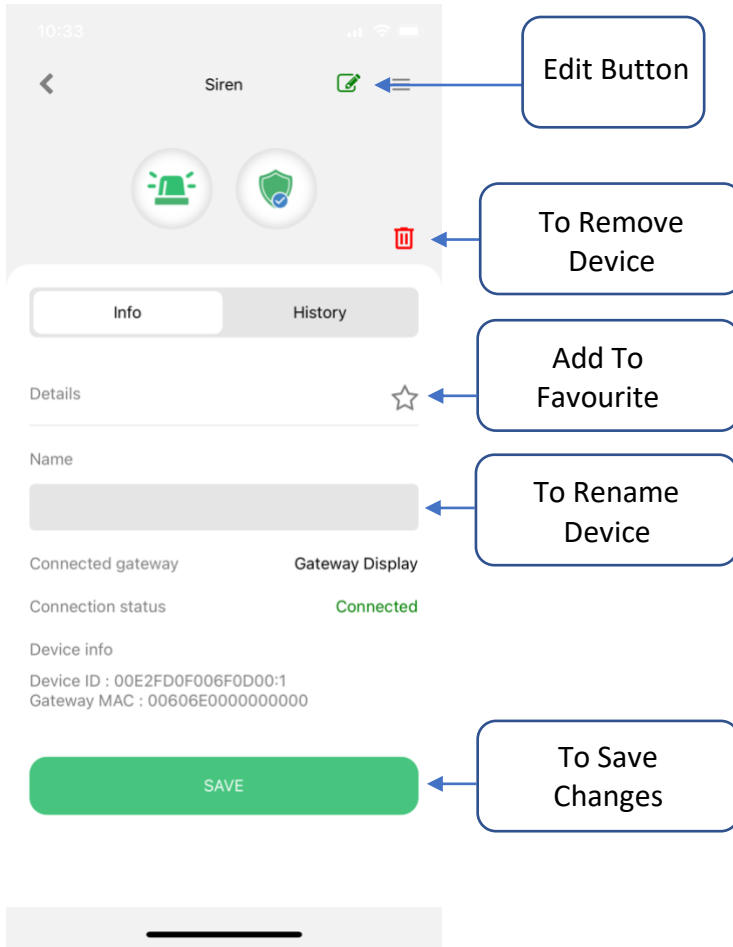
Siren ON/OFF



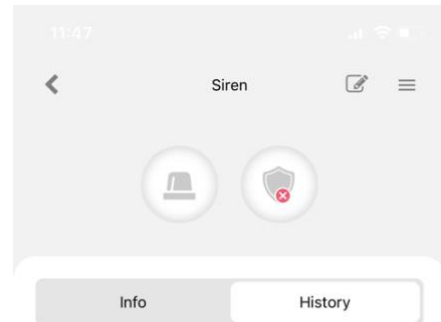
Siren ON/OFF

Arm/Disarmed

Device Status/ Info



Info Page

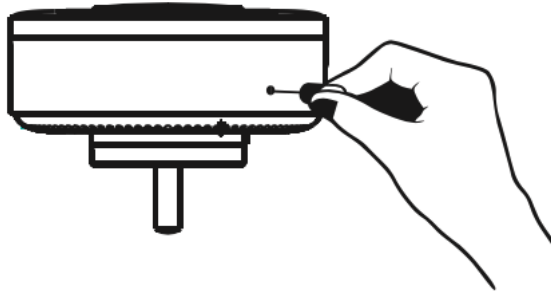


Activity Log

01/04/2021 11:36:37am	OFF
01/04/2021 11:06:30am	OFF
01/04/2021 10:36:24am	OFF
01/04/2021 10:06:17am	OFF
01/04/2021 09:36:10am	OFF
01/04/2021 09:06:03am	OFF
01/04/2021 08:35:55am	OFF
01/04/2021 08:05:47am	OFF
01/04/2021 07:35:39am	OFF
01/04/2021 07:05:30am	OFF
01/04/2021 06:35:21am	OFF
01/04/2021 06:05:12am	OFF
01/04/2021 05:35:03am	OFF

History Page

Reset Siren



Steps:

1. Use a pin key tool to press and hold the reset button for 5 seconds until the LED indicator flashes green 6 times.
2. Now, Siren is returned to the default factory setting.